

How to use and care for your Intermate Device at home.

Patient Name (Last, First): _____

Medication Name/Dose: _____

Start infusion at these times: _____ Approx. infusion time: _____

of days on medication: _____ Total doses (# of days X doses per day): _____

If you experience any of the following side effects, close the clamp to stop the infusion and immediately contact your Health Care Provider (HCP): _____

Need additional help? Contact your Nurse: _____

or contact your Pharmacist: _____



Preparation

Before You Begin

It's easy to use

Your Intermate is a 3-in-1 device designed to make it easier for you at home. It requires only a few easy steps to follow to connect/disconnect – and no programming is required.

Ready to use

Your device comes primed and ready to go.

Discreet and Simple

- It is completely silent (no alarms and no humming noises)
- It stores in a pocket, holder, or on a flat surface while infusing



Attention

- Your device is disposable, and is **for one-time use only**
- Because your Intermate has quick infusion times, you do not need to be connected 24/7

Storage & Preparation

Storage

Store all supplies in a clean, dry location safely away from children and pets.



Store Intermate in the refrigerator or as directed by your pharmacist.



Stay Clean!

Keep your work-space clean.



Keep your hands clean at all times! Re-wash your hands if you touch anything outside your clean area.



Answers to Common Questions



Question	Tips and Solutions
----------	--------------------

How do I remove the Winged Luer Cap?

- To remove blue winged luer cap, turn counter clockwise

What do I do if the medication doesn't seem to be flowing?

- Remember your Intermate flows very slowly, so make sure you have waited long enough.
- You must remove Intermate from the refrigerator 3 hours before connecting (cold solutions infuse slower).
- Ensure all clamps are open (IV and Intermate) and there are no kinks in the tubing.
- Contact your pharmacist or nurses if unable to infuse medication.

What if my Intermate leaks from the reservoir?

- Close the clamp provided on the Intermate.
- Notify the pharmacy or nurse to have your Intermate returned to Baxter.
- If your medication comes into contact with your skin, immediately wash the area with warm soapy water.

What if I see discolouration or floating matter?

- Baxter Intermates should not be used if the solution is not clear or contains floating matter. Keep the faulty device for your pharmacist or nurse to return to Baxter.

Infusion

Preparing for Infusion

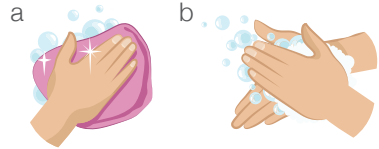
1. Prepare Infusion Area; Wash Hands

Locate and clear an area for infusion.

a/ Clean the work area

b/ Wash your hands/wrists for 15 to 30 seconds

- Rinse hands with fingers pointing down
- Dry hands using a clean paper towel.



2. Gather and Organize Supplies¹

a/ Flush syringes: Normal Saline x ____ Heparin Flush x ____.

b/ Antiseptic wipes/pads x ____.

c/ Remove Intermate containing medication from refrigerator 3 hours before infusion.



Conducting your Infusion

3. Clean the Connector¹

Clean needleless connector with the antiseptic wipes for 15 seconds using friction – wait for antiseptic to dry.



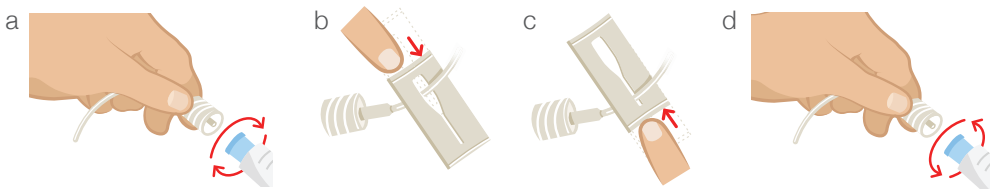
4. Flush the IV¹

a/ Connect the Normal Saline flush syringe to the needleless connector using a push and clockwise twisting motion.

b/ Open clamp(s) on the vascular access device, and flush as directed.

c/ After flushing, close clamp(s) on the vascular access device.

d/ Remove the syringe while holding the needleless connector using a counter-clockwise turning motion

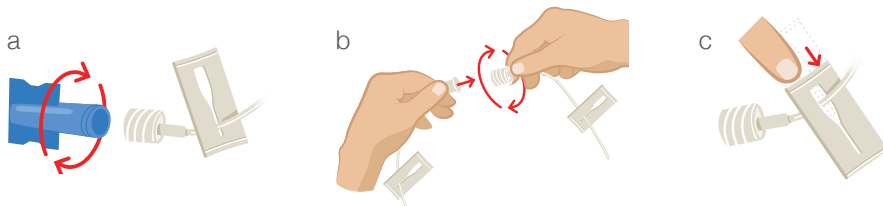


5. Connecting Intermate for Infusion¹

a/ Remove the blue luer cap from the tubing of the Intermate.

b/ Connect the tubing to the needleless connector by pushing and twisting in a clockwise motion.

c/ Open clamps on the vascular access device and the Intermate.



6. During Infusion

Keep Intermate on a flat surface or in a pocket or holder away from any sources of heat (e.g. stove, radiator).

Feel free to move about as your Intermate is designed to be portable.

Keep Intermate level with your vascular access device.

7. Monitor Your Infusion Time

Wait _____ (time) for infusion to be administered.

Ensure medication in Intermate has completely infused (reservoir will be deflated - *note: there can be a small amount of fluid remaining in reservoir even after completion of infusion*).

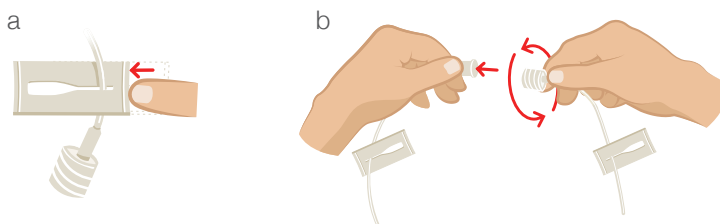


Finishing your Infusion

8. Disconnect Intermate

a/ When infusion is complete, close clamps on Intermate tubing and vascular access device (if present).

b/ Disconnect needleless connector using a counter-clockwise turning motion



9. Wash hands and wrists¹

Wash your hands/wrists for 15 to 30 seconds

- Rinse hands with fingers pointing down
- Dry hands using a clean paper towel.

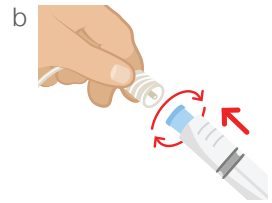


10. Flush the Vascular Access device

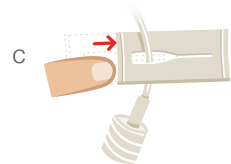
a/ Clean needleless connector with the antiseptic wipes for 15 seconds using friction - wait for antiseptic to dry.



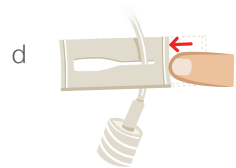
b/ Connect the Normal Saline flush syringe to the needleless connector using a push and clockwise twist motion. If instructed by your nurse: after the Normal Saline flush, connect the Heparin syringe and flush your vascular access device.



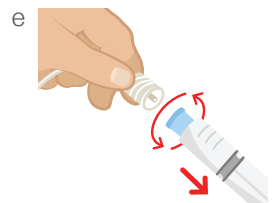
c/ Open any clamps on your vascular access device. Flush as directed.



d/ Close clamps.



e/ Remove the Normal Saline flush syringe from the needleless connector by using a pull and counter-clockwise twist motion.



11. Disposal

Dispose of the Intermate device as directed by the pharmacy. Dispose of other supplies as directed by nurse.

Getting to know your Intermate

Latex-free drug reservoir balloon

Coil cap

Kink-resistant tubing

Tube Clamp

Monitoring your infusion process:

Intermate is full

75% of infusion remains

50% of infusion remains

25% of infusion remains

Intermate empty: Infusion complete

Blue Winged Luer Cap



Baxter

Baxter Corporation
7125 Mississauga Rd., Mississauga, Ontario L5N 0C2

Baxter is a trader of Baxter International Inc.
Baxter is registered in the U.S. Patent and Trademark Office.
© 2017 Baxter. All rights reserved.



¹ Infusion Nurses Society. Journal of Infusion Nursing. Policies and Procedures for Infusion Nursing. 2011 (4th Edition). Hagerstown, MA: Lippincott, Williams & Wilkins.